



# SECTION 3.4\_KSFTFH

## FLAME TRAP EXPLOSION PROOF IN-LINE

### INTRODUCTION

**The model KSFTFH** flame trap ass'y of KSPC is composed of KSPC Model **KSFH** flame arrester and quick closing valve, automatically, in according to a rise temperature of heat. Generally, it's installed to pipe line in front of gas line from each holder and digester. Also, it's prevent igniter to install in using gas equipment line. Flame Trap is designed to protect as a from explosion of propagation of flame.

### Fuse Activating Temperature / time

KSFTFH / DN 25 ~ DN 300	+ 127 °C (=260°F) within 15 seconds
-------------------------	-------------------------------------

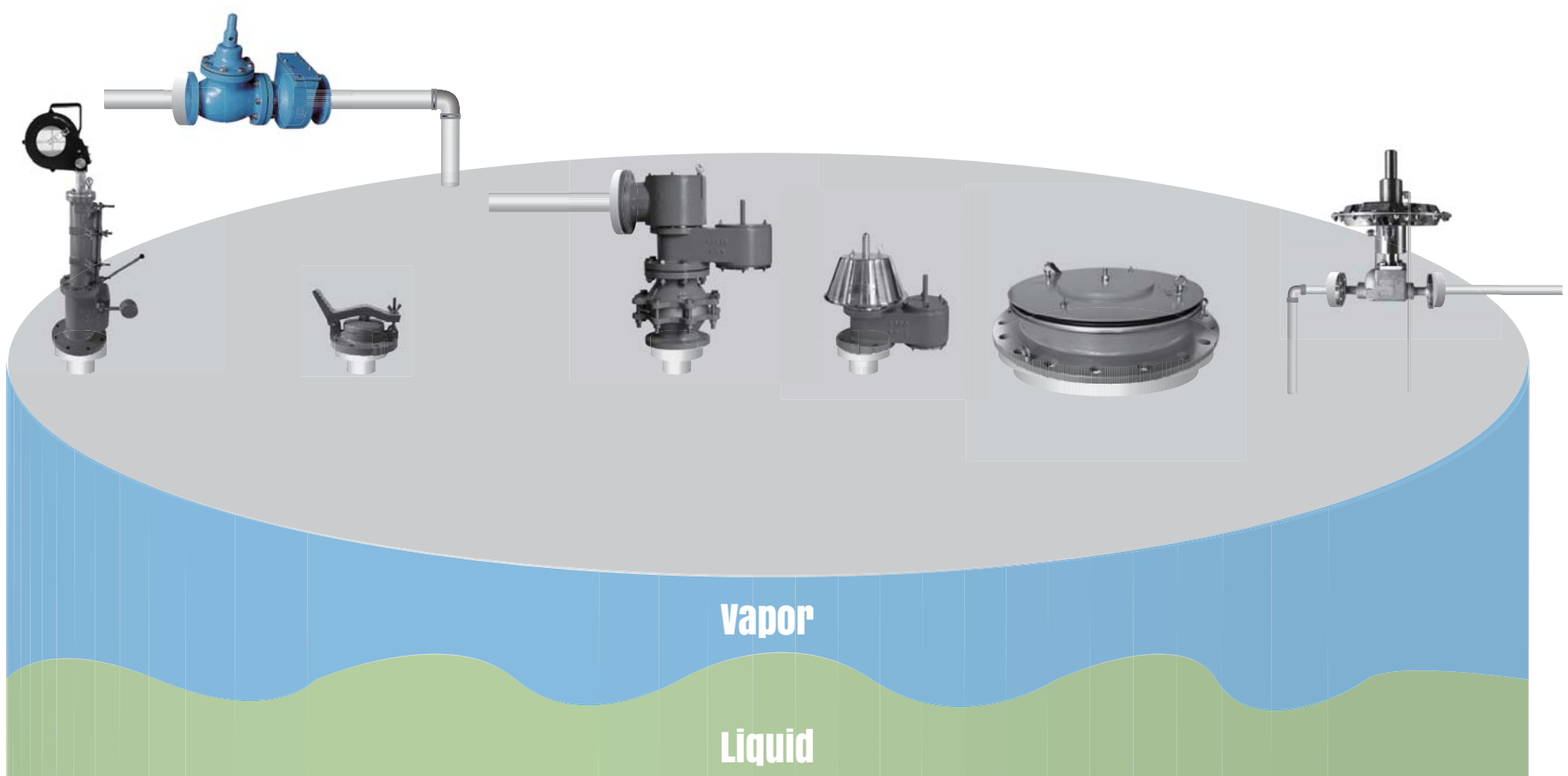
**Body Materials** Aluminium, Nodular Iron, Cast Steel, SS304, SS316, SS316L with various trims  
(Different materials available on request)

**Sizes range** DN 25 ~ DN 300 with ANSI 150lb flanges(Different connections available on request)

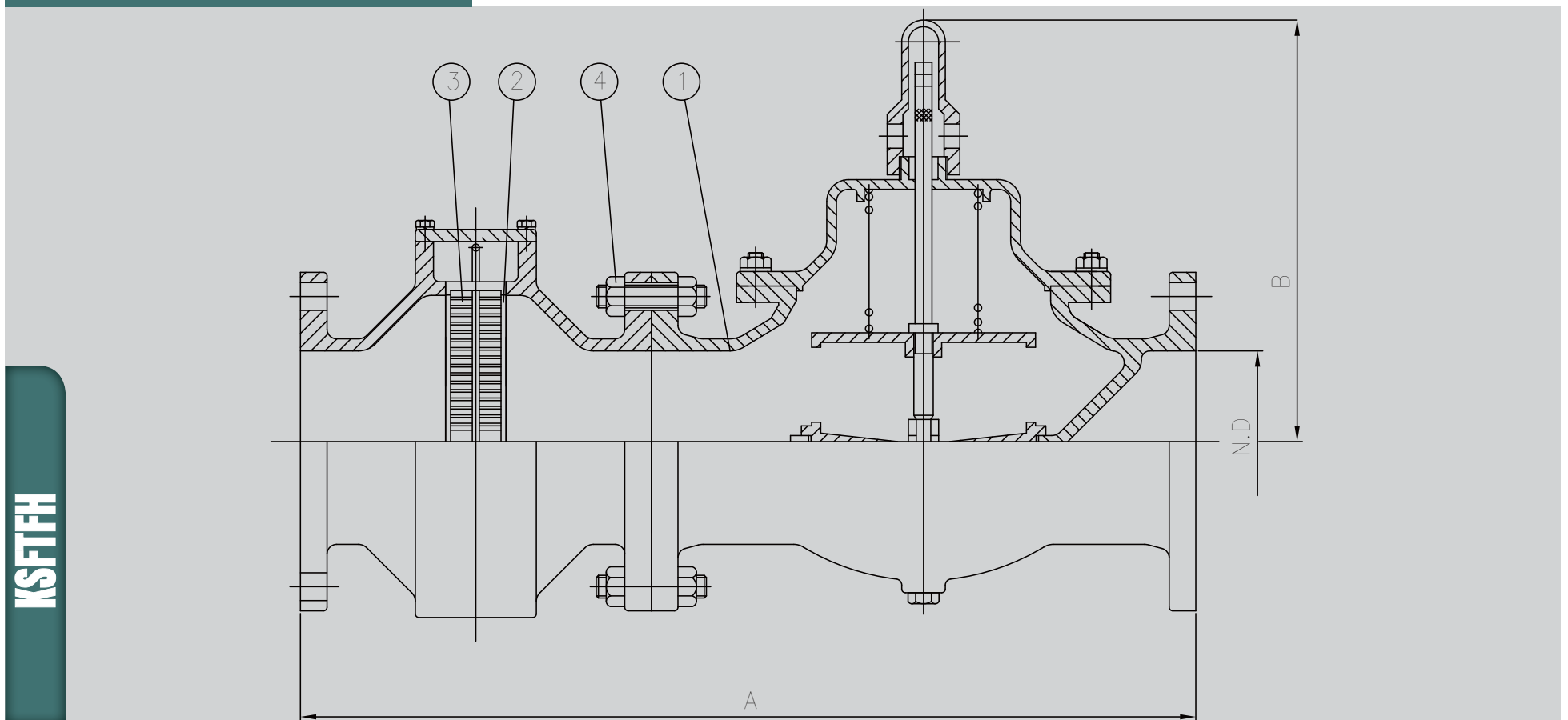
**Rules & Certifications** API 2000, BS7244, and EN 12874 / ISO 16852  
Flame cell : NEC group D or IEC IIA Gases(Other gas groups all available as extras)

**Optimum / optional Design & Arrangements** Stem Jacket type, Steam Tracing type

### APPLICATION



## OUTLINE DRAWING



KSFTFH



Section 3.4  
KSFTFH

## DIMENSION TABLE

SIZE	1"	2"	3"	4"	6"	8"	10"	12"
N.D	25	50	80	100	150	200	250	300
A	350	416	481	595	695	798	989	1048
B	140	185	210	254	345	392	420	524

**NOTE** Standard Connection(ANSI 150LB flange) and JIS or different types are available upon request.

## COMPONENT MATERIAL

ITEM NO	COMPONENT	ALUMINIUM	C.S	S.S
1	BODY	CAST ALUMINIUM	CAST or WELDED C.S	S.S
2	ELEMENT RING	SS304	SS304	SS304 OR SS316L
3	ELEMENT		SS316L	
4	STUD BOLT/NUT	A193-B7 / A194-2H OR S.S		
	STANDARD PAINTING	IN-OUT SIDE EPOXY 150 MICRON WITHOUT S.S & AL PART.		

**NOTE** AL – Aluminium, C.S – Carbon Steel, S.S – Stainless Steel

## MAINTENANCE

- ⚠ Periodic inspection and maintenance is required. The cell assembly can be removed for cleaning purposes.
- ⚠ Cleaning can be accomplished by dipping the entire cell assembly into an appropriate solvent.
- ⚠ Care should be taken not to damage the cell openings as such deformations hamper the flow through the cell.
- ⚠ The gaskets should be inspected and replaced if necessary.